

safend encryptor

Comprehensive Endpoint Data Leakage Prevention



- Protect enterprise data from loss and theft
- Achieve optimum balance between security, productivity and performance
- Facilitate compliance with regulatory standards
- Centrally manage all Safend encryption and port and device control solutions

Endpoint Data Leakage | The Need for Comprehensive Data Protection

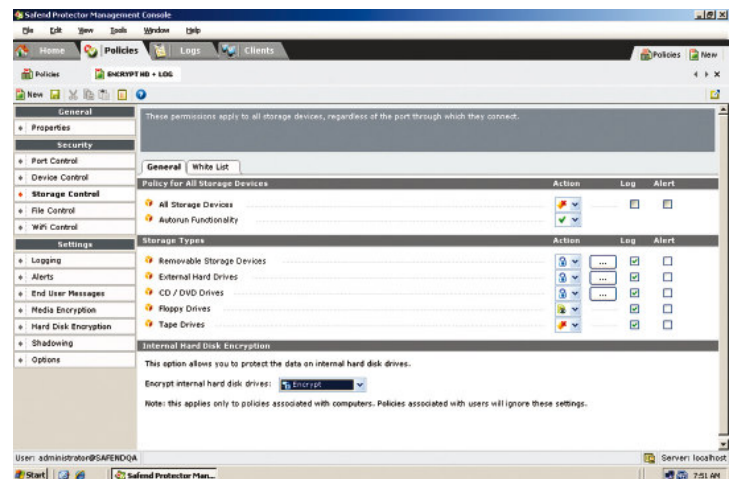
Incidents of stolen and lost computers continue to make the headlines almost daily as the large scale proliferation of storage devices, PCs and laptops by employees has made organizations much more vulnerable to security and data breaches. In fact, security incidents are likely occurring on a much larger scale than reported since many of them are hidden from the public eye. It is a reality: When laptops and mobile devices are lost, so is the data. Furthermore, very little data theft occurs these days from network traffic. Instead, attackers target data stored on hard disks and devices, such as IP, financial and healthcare records and other confidential data. It is crucial for organizations to secure the data stored on PC and laptop hard disks - the financial implications associated with the leakage of confidential data can be staggering; the fines for noncompliance can be astronomical, and the loss of corporate reputation immeasurable.

Safend Encryptor | Eliminate Data Leakage Via PCs and Laptops

Safend Encryptor is a centrally managed internal hard disk encryption solution that ensures the information stored on enterprise computers is safe, even when the data is lost or stolen. The solution leverages the security of full disk encryption and the flexibility of file-based encryption to protect sensitive data residing on enterprise PCs and laptops while maintaining productivity and system performance. This is accomplished by encrypting only data files and avoiding encrypting operating system and program files, an approach that also minimizes operating system failure resulting from the encryption process.

The encryption is enforced by policies established by the administrator and the end-user does not control the encryption behavior. The Safend client provides redundant, multi-tiered anti-tampering measures which thwart any attempt to circumvent encryption policies and alerts the administrator of any such incident.

The combination of Safend Encryptor and Safend Protector provides customers with encryption for internal and external hard disks and removable storage and media, along with granular port and device control using a single management server, a single console, and single agent. Safend's comprehensive encryption solution offers protection of confidential corporate data from loss or theft with stringent AES 256 bit key length security. The unified reporting, logging and alerting for Safend Protector and Safend Encryptor provides full visibility to an organization's protection status and facilitates compliance to the regulatory requirements of the Data Protection Act, HIPAA, GLBA, PCI, SOX and other standards that mandate the implementation of measures to keep sensitive data secure.



Features and Benefits

Easy Installation Process

Allows administrators to incrementally deploy encryption policies to minimize end user disruption.

Step-by-step Deployment

Increases system security while ensuring productivity. During all stages the system is able to boot up regularly.

Complete Transparency

Enables encryption process to run in the background, without any interference with users' ongoing work; it does not require users to activate the encryption/decryption process.

Performance Remains Intact

Maintains performance of CPU and hard disk by avoiding the encrypting and decrypting of system or program files that do not require protection.

Simplified Key Management

Generates a random key unique to the machine (Machine Key). A password is required that authenticates the user and this password must adhere to password policy that is predefined by the administrator.

Easy Recovery Mechanism

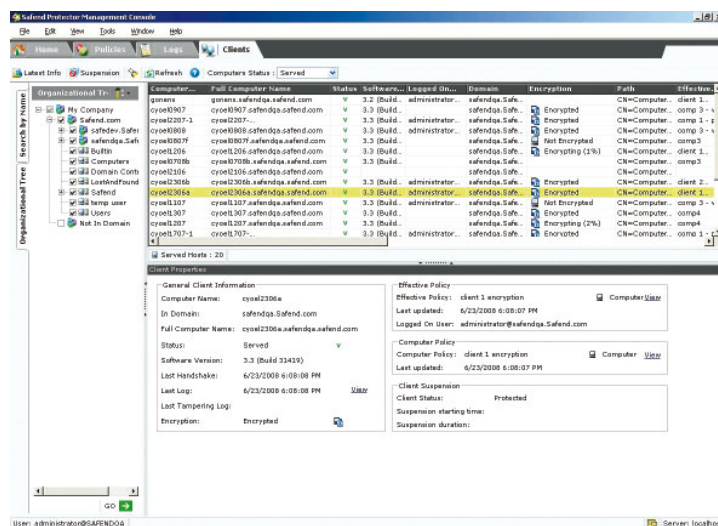
Provides a user-friendly mechanism for recovery of entire machine or specific files directly from the encrypted machine. The entire machine or specific files are recovered without the need to boot from an external operating system.

Comprehensive Audit Trail

Audit and tracks all protected machines for encryption status and encryption related actions.

Safend Encryptor's Technician Mode

In order to maintain proper security levels, it is important to allow maintenance of enterprise systems without exposing classified data. Full Disk Encryption products have two modes in which the system can operate: completely encrypted or completely exposed. Safend Encryptor's file-based approach to hard disk encryption presents a third method: Technician Mode. This feature enables a technician to install new programs and perform maintenance tasks without risking exposure to classified, encrypted data.



About Safend

Safend is a leading provider of endpoint data leakage prevention (DLP) solutions that protect against corporate data loss by offering comprehensive solutions for data encryption and port and device control. The Safend DLP Suite encrypts internal and external hard drives, removable storage and CD/DVDs and provides granular port and device control over all physical, wireless and removable media devices, ensuring compliance with regulatory data security and privacy standards. With more than 1,200 customers worldwide and 1.7 million licenses sold, Safend's solutions are deployed by multinational enterprises, government agencies and small to mid-size companies across the globe.



www.safend.com

Safend Ltd. 32 Habarzel Street, Tel-Aviv 69710, Israel Tel: +972.3.6442662, Fax: +972.3.6486146
Safend Inc. 2 Penn Center, Suite 301, Philadelphia, PA 19102, USA Tel: +1.215.496.9646, Fax: +1.215.496.0251
Safend S.A. 5, Avenue Gaston Diderich L-1420, Luxembourg Tel: +352 26 87 08 67, Fax: +352 26 87 08 68
Toll free from the US (to US and Israel): 1.888.225.9193 info@safend.com

Copyright© 2009 Safend Ltd. The information contained herein is accurate at the time of publishing and subject to change without notice. 01/09