

# safend discoverer

Locate and Map Sensitive Data



- Map, classify and locate sensitive data stored on organizational endpoints
- Enable compliance with regulatory, data security, and privacy standards
- Gain visibility and insight to enforce a comprehensive security policy appropriate for your organizational priorities
- Manage your data protection measures with a single server, single console, single lightweight agent

## Safend Data Protection Suite

will protect your organization against endpoint data loss, misuse or theft through its single server, single console, single agent architecture. The award winning suite includes:

**Safend Auditor** - immediately recognize security risks by identifying WiFi ports or devices currently or historically connected to endpoints.

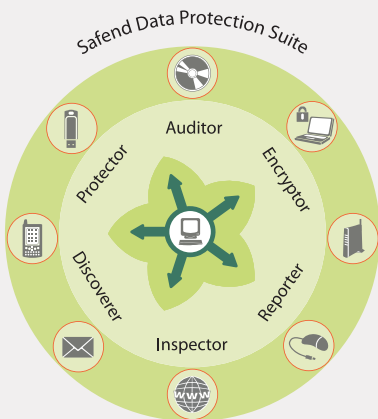
**Safend Discoverer** - locate and map sensitive data at rest.

**Safend Inspector** - inspect, classify and block leakage of sensitive content through email, IM, Web, external storage, printers and more.

**Safend Encryptor** - transparently encrypt laptops and PC's.

**Safend Protector** - block or encrypt data transferred to external media and devices (CD/DVD, USB, Firewire, etc.) and block connections to unsecure wireless networks.

**Safend Reporter** - easily generate graphical regulatory compliance reports and security log summaries through an intuitive tool.



## The Need for Endpoint Content Control

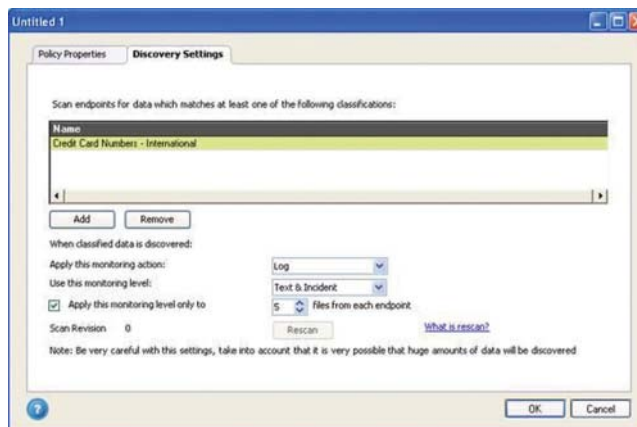
Industry statistics consistently show that the most significant security threat to the organization comes from within. With over 60% of corporate data residing on endpoints, gateway solutions and written security policies alone can not mitigate the risk. The award winning Safend Data Protection Suite provides complete endpoint data protection without compromising productivity. Tamper resistant and operating transparently on each endpoint, the Safend Data Protection suite will discover, classify, protect, alert, log, block and encrypt your organizations most vital data whether devices are on or off line.

***“The Transportation Security Administration is warning 1,195 of its former employees that a contractor may have mailed their Social Security numbers and birth dates to the wrong addresses and left them open to identity fraud.”***  
- USA Today

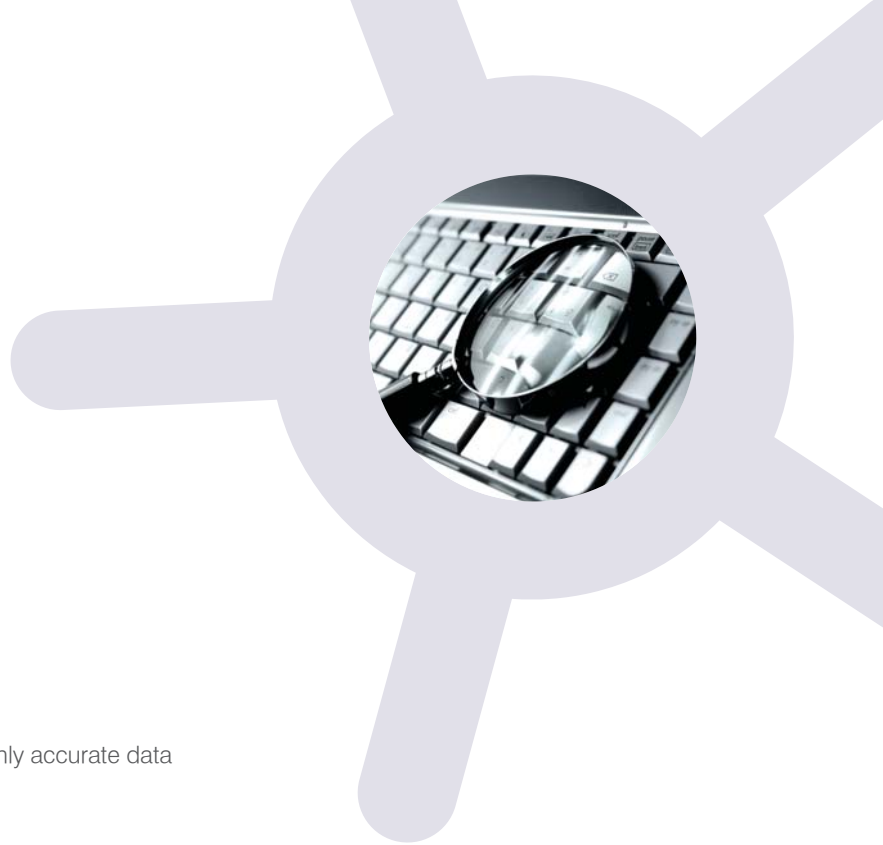
***“Average cost per data breach incident was \$6.6 million and the cost per record was \$202 in 2008”*** - Ponemon Institute

***“Information breaches trigger an average 5% drop in company share prices. Recovery to pre-incident levels takes nearly a year”*** - EMA Research

## Discoverer - maps your sensitive data



Safend Discoverer maps and locates sensitive data stored on organizational endpoints and network shares. Running in the background with minimal impact on productivity, Discoverer saves valuable time and improves efficiency by expertly mapping data and providing insight to unsecured data and faulty business processes. Armed with this information, administrators can improve security and compliance initiatives.



## Safend Discoverer - Features and Benefits

### ○ Comprehensive Data Classification

Multiple data identification techniques can be combined for highly accurate data classification including:

- Keyword and pattern recognition of file text and meta data
- Mathematical and logical verifiers
- File types and properties including name, size, author, creation date etc
- Data Fingerprinting

### ○ Built-in Compliance Policies

Includes preconfigured security policies designed to address specific regulatory compliance standards, such as PCI, HIPAA, and European privacy legislation.

### ○ Discovery Record

Receive detailed logs and reports on classified data located and mapped. The records may include file path only, file and text or hidden copies of the file.

### ○ Tamper Resistant

Multi-tiered anti-tampering capabilities guarantee the integrity of the collected data.

### ○ Flexible and Intuitive Management

Automatically synchronizes with Microsoft Active Directory and Novell eDirectory.

## Technical Specifications

### System Requirements - Agent

- ✓ Windows XP Professional (SP1, SP2, SP3)
- ✓ Windows XP Tablet PC Edition (SP1, SP2, SP3)
- ✓ Windows 2003 Server (SP1, SP2)
- ✓ Windows Vista Enterprise, Business and Ultimate Editions (SP1)

### System Requirements - Server

- ✓ Windows 2003 Server (SP1, SP2)

## About Safend

Safend is a leading provider of endpoint data protection software. Our products protect against corporate data loss by offering comprehensive data encryption, port control, device control and content inspection, ensuring compliance with regulatory data security and privacy standards. Safend's products encrypt internal and external hard drives, removable storage devices and CD/DVDs; provide granular port and device control over all physical, wireless and removable media devices; and controls sensitive data transferred over endpoint and network channels. With more than 1,800 customers worldwide and 2.5 million licenses sold, Safend's software is deployed by multinational enterprises, government agencies, healthcare organizations, and small to mid-size companies across the globe.



**Safend Ltd.** 32 Habarzel Street, Tel-Aviv 69710, Israel Tel: +972.3.6442662, Fax: +972.3.6486146

**Safend Inc.** 2 Penn Center, Suite 301, Philadelphia, PA 19102, USA Tel: +1.215.496.9646, Fax: +1.215.496.0251

**Safend S.A.** 5, Avenue Gaston Diderich L-1420, Luxembourg Tel: +352 26 87 08 67, Fax: +352 26 87 08 68

Toll free from the US (to US and Israel): 1.888.225.9193 [info@safend.com](mailto:info@safend.com)

[www.safend.com](http://www.safend.com)

Copyright © 2009 Safend Ltd. The information contained herein is accurate at the time of publishing and subject to change without notice. 12/09