

BitDefender v2 for
MS ISA Servers

Evaluator's guide

Quick summary

PRODUCT	BitDefender v2 for MS ISA Servers
PLATFORMS	Microsoft Windows 2000 Server or Advanced Server + SP4; Windows 2000 Datacenter Server; or Windows Server 2003 Standard Edition or Enterprise Edition.
DESCRIPTION	BitDefender for MS ISA Servers offers antivirus protection for web traffic, including protection for data received through webmail. BitDefender for MS ISA Servers integrates with the firewall and the web cache server, Microsoft ISA Server, through two application (ISAPI) filters offering antivirus protection for the HTTP, FTP and FTP through HTTP traffic.
AVAILABILITY	4 th of April 2005 The product is available on all the BitDefender websites, and through local distributors.
LANGUAGES	English(by 4 th of April 2005)
PRICING*	\$180 for 10 users \$775 for 50 users \$1300 for 100 users
LICENSE	The license includes: <ul style="list-style-type: none">▪ Technical support▪ Automatic virus definitions updates▪ Upgrade to any new product version▪ Guaranteed 24 hours response for any suspicious file

*prices are quoted from the BitDefender e-store: <http://www.bitdefender.com/bd/site/buy.php>

BitDefender for MS ISA Servers – main features

Certified Antivirus Engines

BitDefender for MS ISA Servers ensures antivirus protection by incorporating the BitDefender antivirus engines, certified by ICSA Labs, Checkmark, CheckVir, Virus Bulletin and TUV.

Improved virus detection

Heuristic detection and proactive behavior blocking, doubled by lightning-fast update of the signature lists make **BitDefender for MS ISA Servers** a reliable solution for corporate environments.

Integrated with Microsoft ISA 2004 Server and Microsoft ISA 2000 Server

BitDefender for MS ISA Servers seamlessly integrates with Microsoft ISA 2004 Server and with Microsoft ISA 2000 Server through two application filters, an HTTP and an FTP filter.

HTTP and FTP Filter

The HTTP and FTP filters are application (ISAPI) filters that scan all HTTP and FTP requests for viruses. Depending on the rules set by the content filter and on the scanning results, requests are forwarded to the ISA Web Proxy.

Filter management

BitDefender for MS ISA Servers offers administrators policy controls for virus protection and the ability to set specific filtering rules for specific groups of IP addresses across multiple scan types, improving the flexibility of the scanning and configuration process.

Easy to use interface

The new **BitDefender for MS ISA Servers** comes with an MMC based interface that offers a friendly working environment. The wizard system implemented in the interface enhances the usability of the product while the snap-in system provides the actual management functionality.

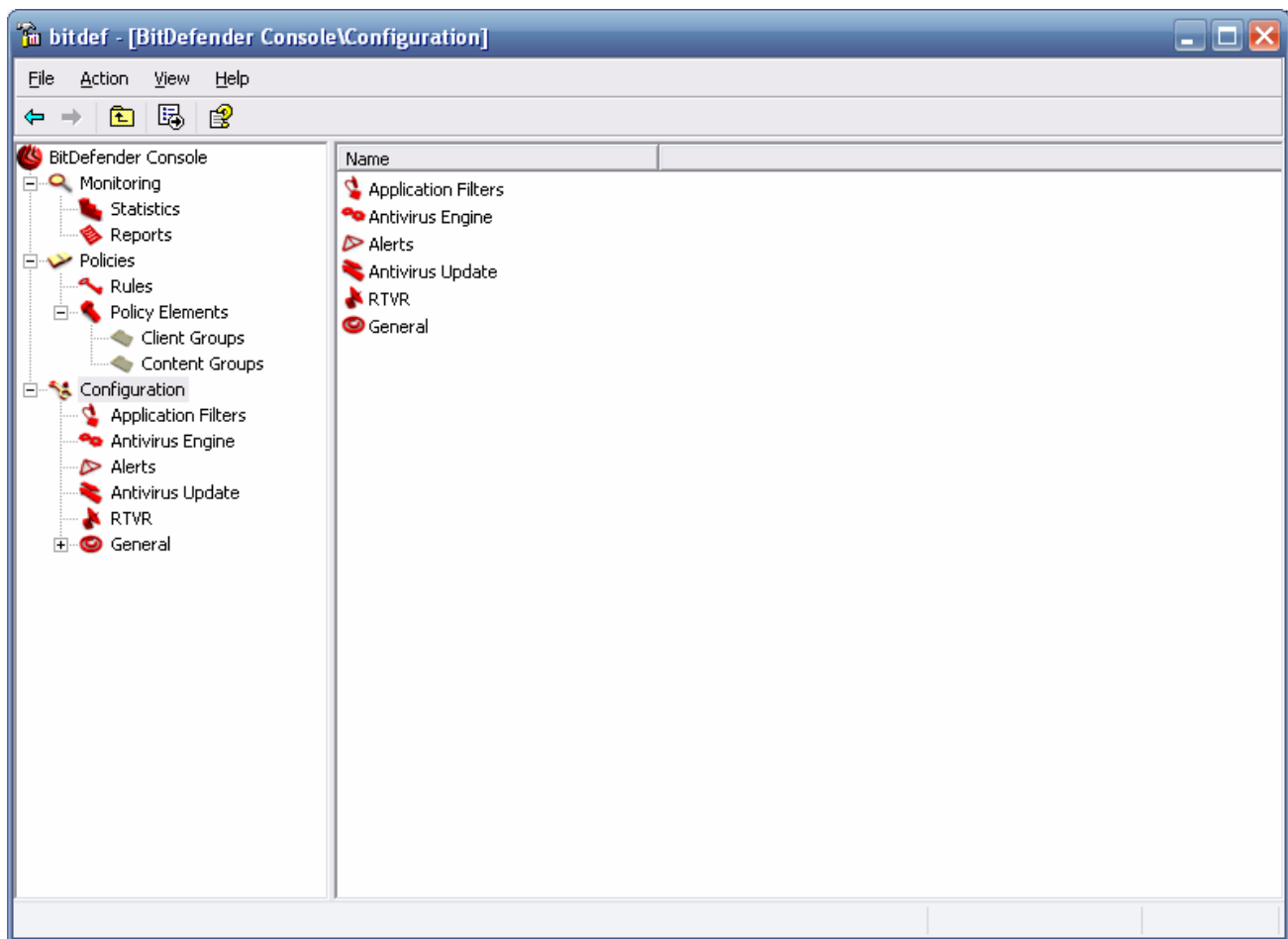
Centralized Management from a Network Location

BitDefender for MS ISA Servers is fully compatible with BitDefender Enterprise Manager, offering organizations centralized management for antivirus protection and security policies inside complex networks.

Brief description

As content entering or leaving your company must meet security policies, it is crucial to choose the appropriate protection for each network level, especially for the gateway level. The World Wide Web has become an entry point for malicious content, through file transfers or simple browsing.

BitDefender for MS ISA Servers offers antivirus protection for web traffic, including protection for data received through web mail. **BitDefender for MS ISA Servers** integrates with the firewall and the web cache server, Microsoft ISA Server, through two application (ISAPI) filters offering antivirus protection for the HTTP, FTP and FTP through HTTP traffic.



BitDefender for MS ISA Servers – Configuration Window

Antivirus

Filter management

The **filter manager** is an intelligent system for managing the **BitDefender for MS ISA Servers** antivirus filters for HTTP and FTP traffic. This system is based on rules which combine three elements: client groups and content groups, known as policy elements, and scanning actions.

Content groups specify lists of MIME (Multipurpose Internet Mail Extensions) types and extensions. Client groups specify sets of clients identifiable by their IP. To these policy elements, the administrator can apply different scanning actions per protocol, HTTP, FTP upload and FTP download.

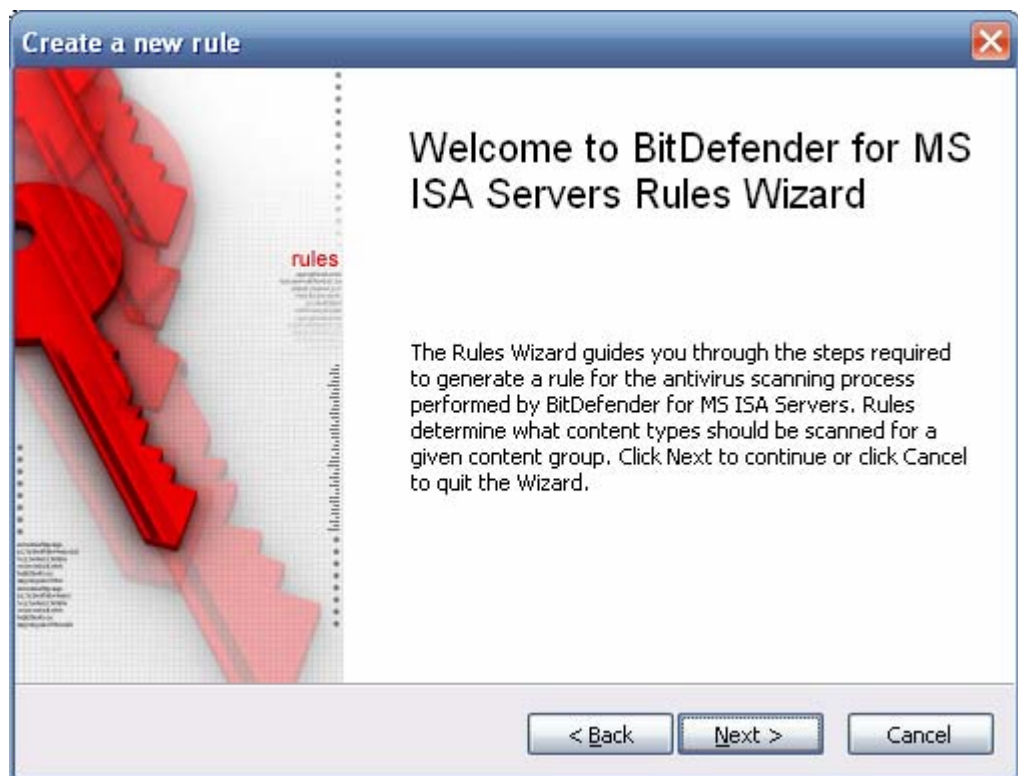
An example of a rule is “scan this *content group* for HTTP traffic for this *client group* for HTTP traffic”. By default, **BitDefender for MS ISA Servers** scans all traffic through HTTP and FTP protocols. Below you can see the configuration wizards.



BitDefender for MS ISA Servers – Content Groups Wizard

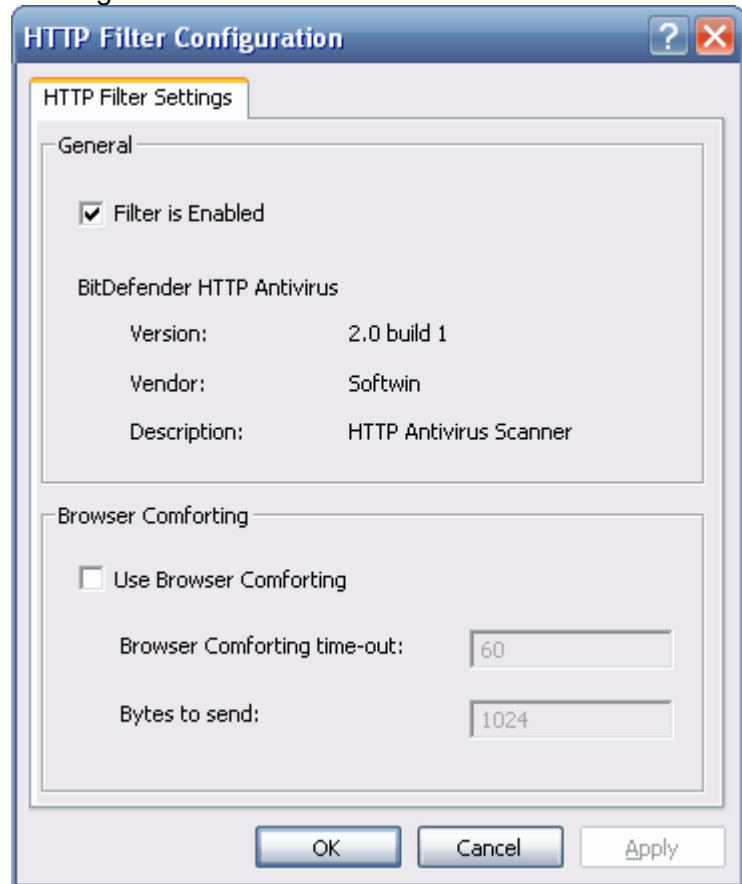


BitDefender for MS ISA Servers – Client Groups Wizard



BitDefender HTTP Filter

BitDefender HTTP Filter is the module that integrates in Microsoft ISA Server and manages the antivirus scanning of the HTTP traffic. Due to the browser comforting feature, the very small overhead implied by the antivirus scanning of all HTTP traffic is not visible to the end user, as chunks of the requested data are sent to the browser while the download is in process. See below the configuration dialog.



BitDefender for MS ISA Servers – HTTP Filter

BitDefender FTP Filter

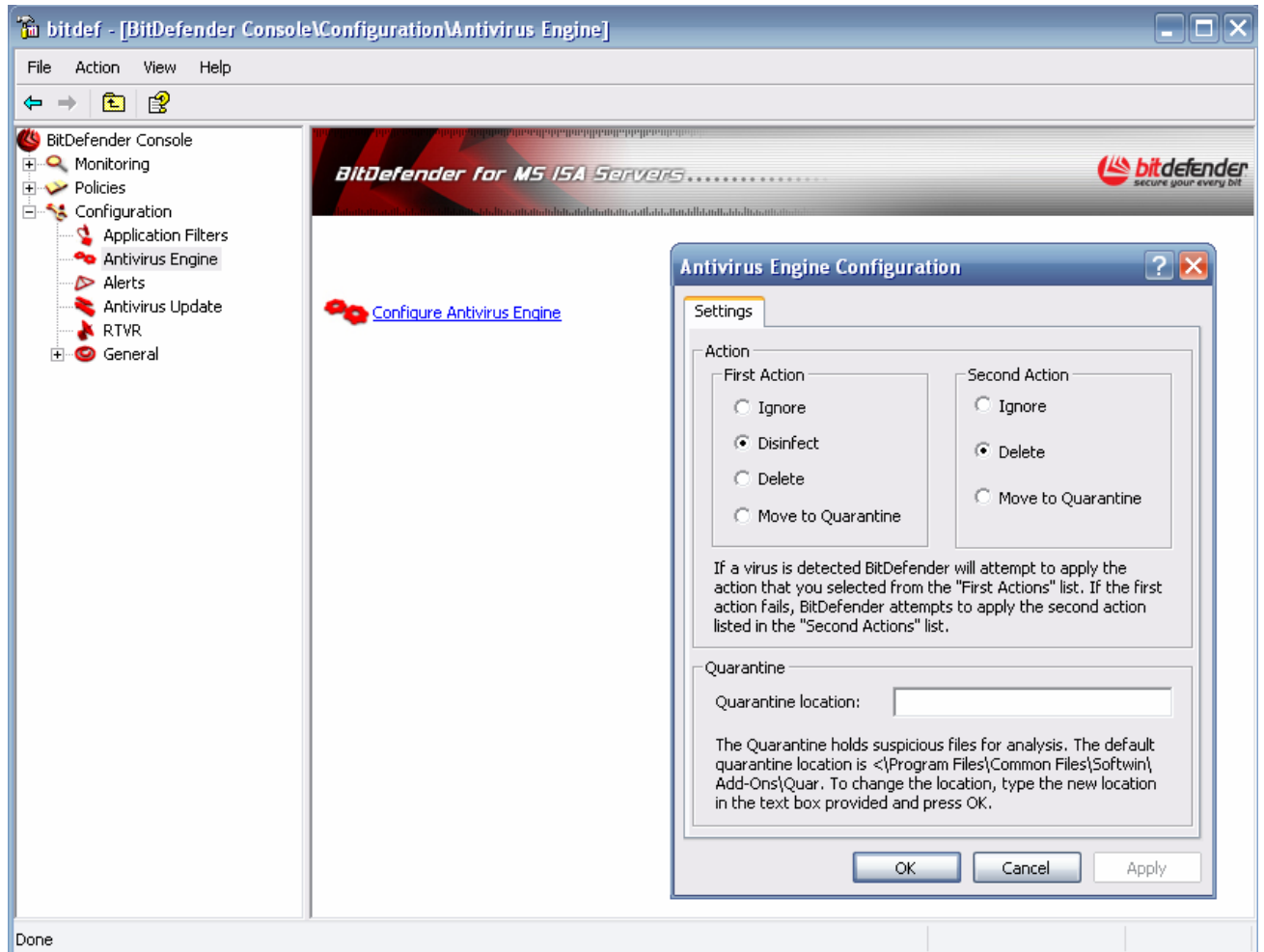
BitDefender FTP Filter is the module that integrates in Microsoft ISA Server and manages the antivirus scanning of the FTP traffic. See below the configuration dialog.



BitDefender for MS ISA Servers – FTP Filter

Antivirus Engine

BitDefender for MS ISA Servers ensures antivirus protection by incorporating the BitDefender antivirus engines, certified by ICSA Labs, Checkmark, CheckVir, Virus Bulletin and TUV.



BitDefender for MS ISA Servers – Configure Antivirus Engine

Other features

Automatic Update

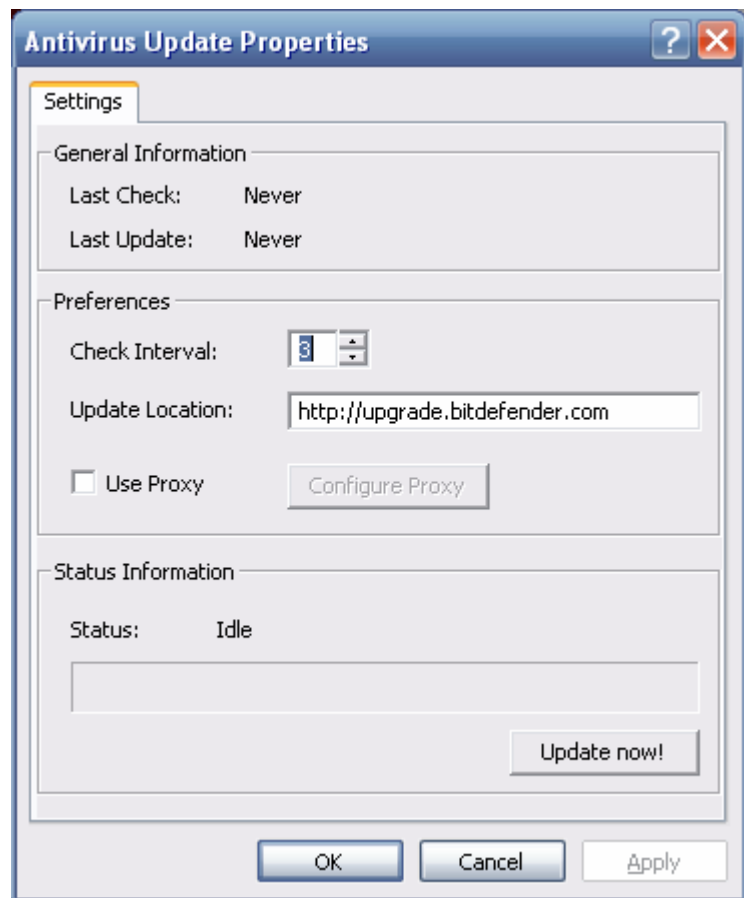
BitDefender for MS ISA Servers offers intelligent updates for the virus definitions and restricted content databases. Due to the advanced BitDefender technology implemented in the update module, the antivirus protection is not discontinued during the update process.

Secures Infected or Suspected Files

Infected or suspected files are isolated in quarantine zones. The quarantine zone can be analyzed at any time by the IT manager or it can be sent for analysis to the BitDefender Antivirus Lab.

Updates and Upgrades

Registered users benefit from automatic updates and from free upgrades to any new version of the product during the license period. Special pricing offers are available to returning clients.



BitDefender for MS ISA Servers – Update Window

Reports and Notifications

BitDefender for MS ISA Servers comes with useful “Reports” and “Statistics” modules that provide detailed information about the scanned files. The “Alerts” module is a tool used to alert the administrator in case a virus, warning or error occurred.

System requirements

**Microsoft ISA 2000 Server or
Microsoft ISA 2004 Server are required.**

Feature comparative

AV for ISA Servers Products Comparative		Kasperksy AV for ISA Server	Trend Micro Interscan Webprotect for ISA	Panda ISA Secure	Symantec AV for ISA	McAfee Security Shield	Bitdefender for MS ISA Server
Engines	Antivirus heuristic scan	✓	✓	✓	✓	✓	✓
	Scan inside archives	✓	✓	✓	✓	✓	✓
	Specify first action to take on infected files	✗	✓	✓	✓	✓	✓
	Specify second action to take on infected files	✗	✓	✓	✓	✓	✓
General	Microsoft ISA 2000 Server integration	✓	✓	✓	✓	✓	✓
	Microsoft ISA 2004 Server integration	✗	✗	✓	✗	✓	✓
	Create client groups	✓	✗	✗	✗	✓	✓
	Create client groups by single IP (or range)	✓	✗	✗	✗	✓	✓
	Create content groups	✗	✗	✗	✗	✗	✓
	Create policies for the groups created	✓	✗	✗	✗	✓	✓
HTTP	Enable/disable HTTP scan	✓	✓	✓	✓	✓	✓
	Scan only specified extensions	✗	✓	✓	✓	✓	✓
	Scan only specified content groups	✗	✗	✗	✗	✗	✓
	Don't scan specified extensions	✓	✓	✗	✓	✓	✓
	Don't scan specified content groups	✗	✗	✗	✗	✗	✓
	Scan traffic from only selected client groups	✗	✗	✗	✗	✓	✓
	Don't scan traffic from selected client groups	✓	✗	✗	✗	✓	✓
	Scan traffic from all except selected client groups	✓	✗	✗	✗	✓	✓
	Define URL white list	✗	✗	✗	✗	✗	✓
	Send to browser partially scanned files (browser comforting)	✓	✓	✗	✓	✓	✓

AV for ISA Servers Products Comparative		Kaspersky AV for ISA Server	Trend Micro InterScan Webprotect for ISA	Panda ISA Secure	Symantec AV for ISA	McAfee Security Shield	Bitdefender for MS ISA Server
FTP	Enable/disable FTP scan	✓	✗	✗	✗	✓	✓
	Enable/disable FTP scanning on upload and/or download	✗	✗	✗	✗	✓	✓
	Scan only specified names, extensions	✗	✗	✗	✗	✓	✓
	Scan only specified content groups	✗	✗	✗	✗	✗	✓
	Exclude specified names, extensions	✗	✗	✗	✗	✓	✓
	Exclude specified content groups	✗	✗	✗	✗	✗	✓
	Scan traffic from only selected client groups	✓	✗	✗	✗	✓	✓
	Don't scan traffic from selected client groups	✓	✗	✗	✗	✓	✓
	Scan traffic from all except selected client groups	✗	✗	✗	✗	✓	✓
	Define FTP Addresses white list (upload and/or download)	✗	✗	✗	✗	✗	✓
	FTP over HTTP	✓	✓	✓	✓	✓	✓
Update	Automatic update	✓	✓	✓	✓	✓	✓
	Manual update	✓	✓	✓	✓	✓	✓
	Update from internet	✓	✓	✓	✓	✓	✓
	Update from LAN	✓	✗	✓	✗	✗	✓
	Specify proxy settings	✓	✓	✓	✓	✓	✓
	Repeat interval	✓	✓	✗	✓	✓	✓
	Display current pattern file	✓	✓	✓	✓	✓	✓
Stats	View statistics	✗	✗	✓	✓	✓	✓
	Generate reports	✗	✓	✓	✓	✗	✓
Alerts	Notify via ISA Server	✓	✗	✗	✓	✗	✓
Others	Status window of all components (enabled / disabled)	✗	✓	✓	✓	✓	✓
	Register product from the interface	✓	✓	✓	✓	✗	✓
	Product documentation	✓	✓	✓	✓	✓	✓

✓ Available



Feature not available

NOTE:

This comparative was carried out by the BitDefender Team for informational purposes.

All product names are trademarks registered by the respective companies.

This comparative is based on feature lists provided by the producers of the listed software products.

Scanning engines

- incremental signature updates
- disinfection of all viruses in the wild

Supported archives type:

Ace	Arc	Arj	BZip2
Cab	Cpio (clean+delete)	Gzip (clean+delete)	Ha
Imp	Lha	Rar	Rpm (clean+delete)
Tar (clean+delete)	Z	Zip (clean+delete)	Zoo

Supported mail archives:

Dbx, Mbx, Pst, Mime, Mbox, Hqx, Uudecode, Tnef

Heuristic detection

Using the heuristic detection malicious threats can be detected even their signature does not exist in the database.

BitDefender includes heuristic detection for the following types of viruses:

- Win32 file infectors
- IRC-Scripts
- BAT Macro
- BOOT
- DOS executables
- VB scripts

HiVE Technology

BitDefender engines now include Heuristics in Virtual Environment technologies, whereby behaviour

and heuristic analysis is performed for suspicious files in a safe context, allowing detection to take place for new viruses and variants, without signature updates.

Awards



Contact Info

Main site: www.bitdefender.com

Sales department: sales@bitdefender.com

On-line Store <http://buy.bitdefender.com>

Find a distributor: http://www.bitdefender.com/partner_list/

Technical support: support@bitdefender.com

FAQ: <http://www.bitdefender.com/support/faq.htm>

Phone: 0040-21-233 07 80

Address: SOFTWIN
5th Fabrica de Glucoza St.
PO BOX 52-93
Bucharest, ROMANIA